



**COMPASS**  
CHARTER SCHOOLS



# **2020-21 Finance Update**

## **January 2021 Update**

**(855) 937- 4227**

**CompassCharters.org**

**COMPASS**  
CHARTER SCHOOLS



# Agenda

- Enrollment Update
- Fiscal Impacts
- Q & A



# **Our Mission and Vision**

## **MISSION STATEMENT**

Our mission is to inspire and develop innovative, creative, self-directed learners, one scholar at a time.

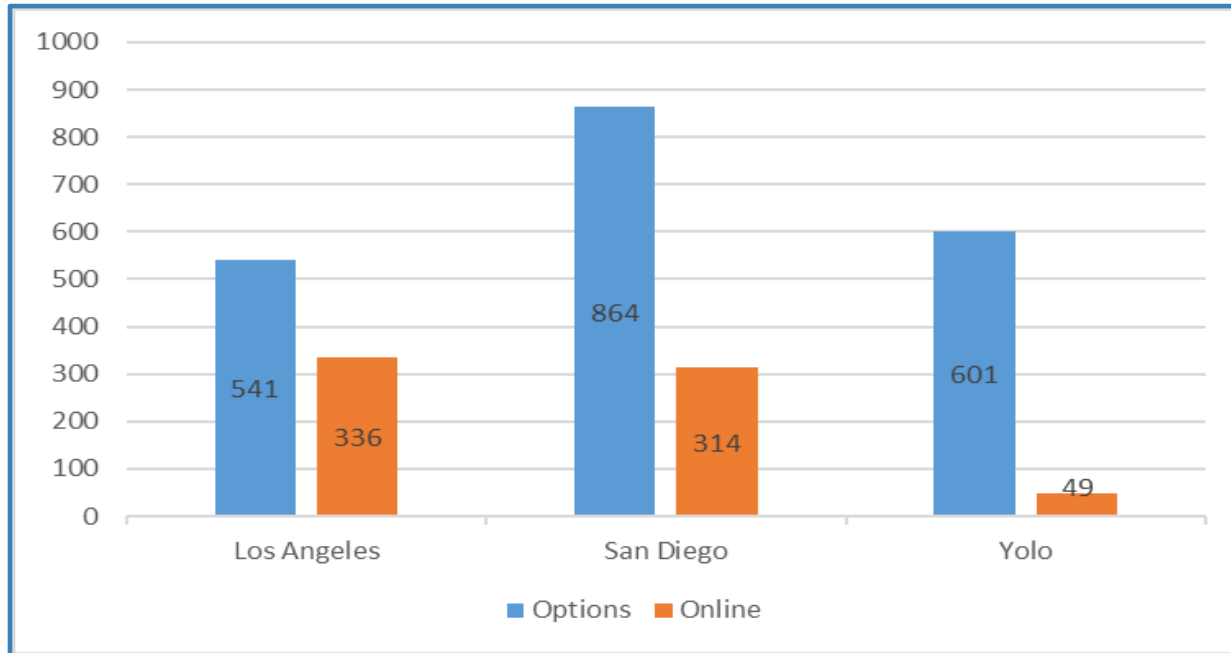
## **VISION STATEMENT**

Our vision is to create a collaborative virtual learning community, inspiring scholars to appreciate the ways in which arts and sciences nurture a curiosity for life-long learning, and prepare scholars to take responsibility for their future success.



## Enrollment Caps

Los Angeles	San Diego	Yolo	Total
877	1,178	650	<b>2,705</b>





# Fiscal Impacts

Grade Span	LCFF Base Grant
TK-3	\$7,878
4-6	\$7,997
7-8	\$8,234
9-12	\$9,543

Grade Span	Grade Span Adjustment
TK-3	\$819
9-12	\$248



## FY21 Revenue Projections

Los Angeles	San Diego	YOLO	Home Office	Total
\$9,407,191	\$13,042,668	\$6,216,287	\$0	\$28,666,144

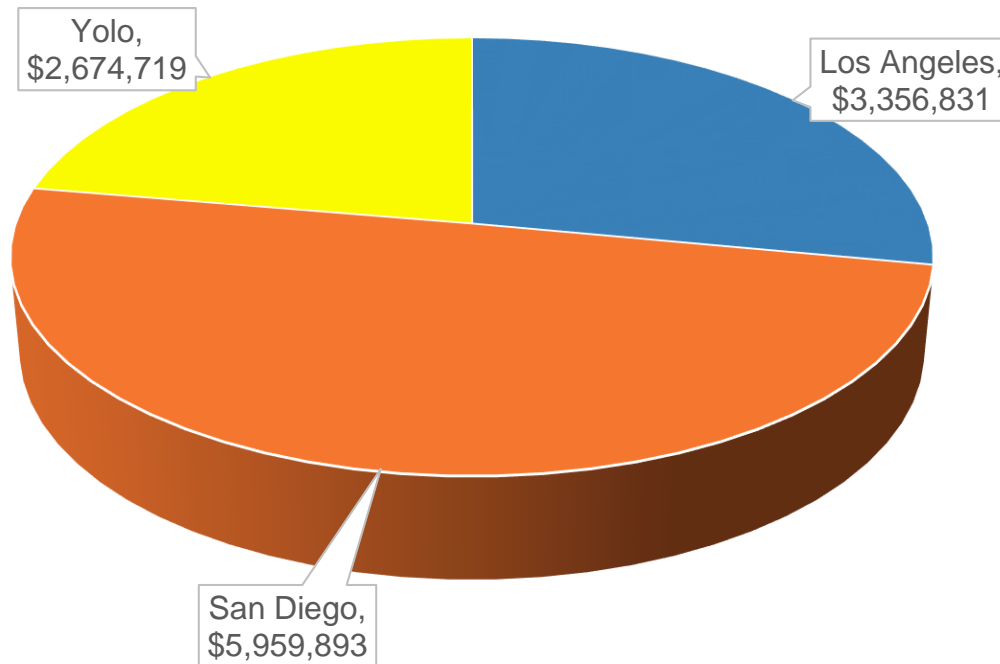
## FY21 Expense Projections

Los Angeles	San Diego	YOLO	Home Office	Total
\$8,844,831	\$12,290,743	\$5,485,090	\$495,000	\$27,115,664

Based on 2019-20 P2 ADA per SB 98

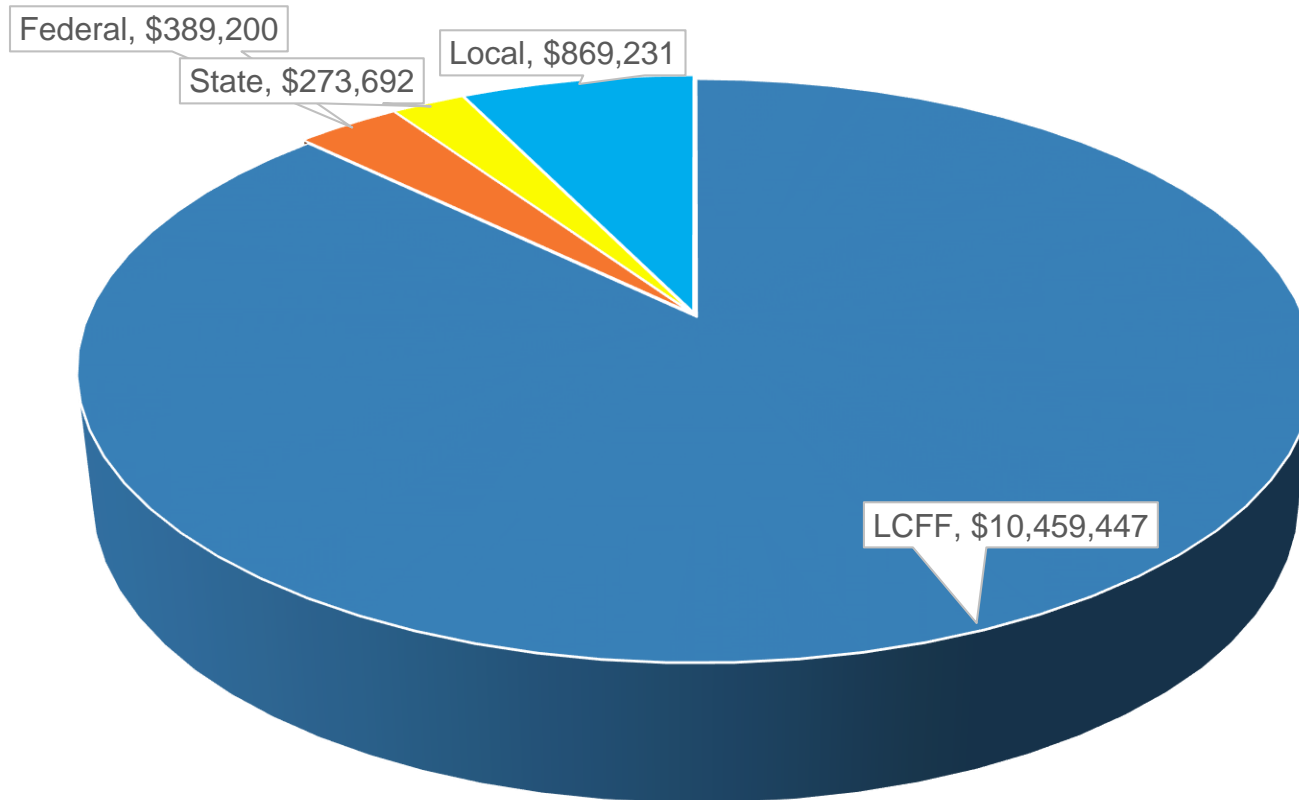


## FY21 Revenue Stream by Charter – actual through December 2020





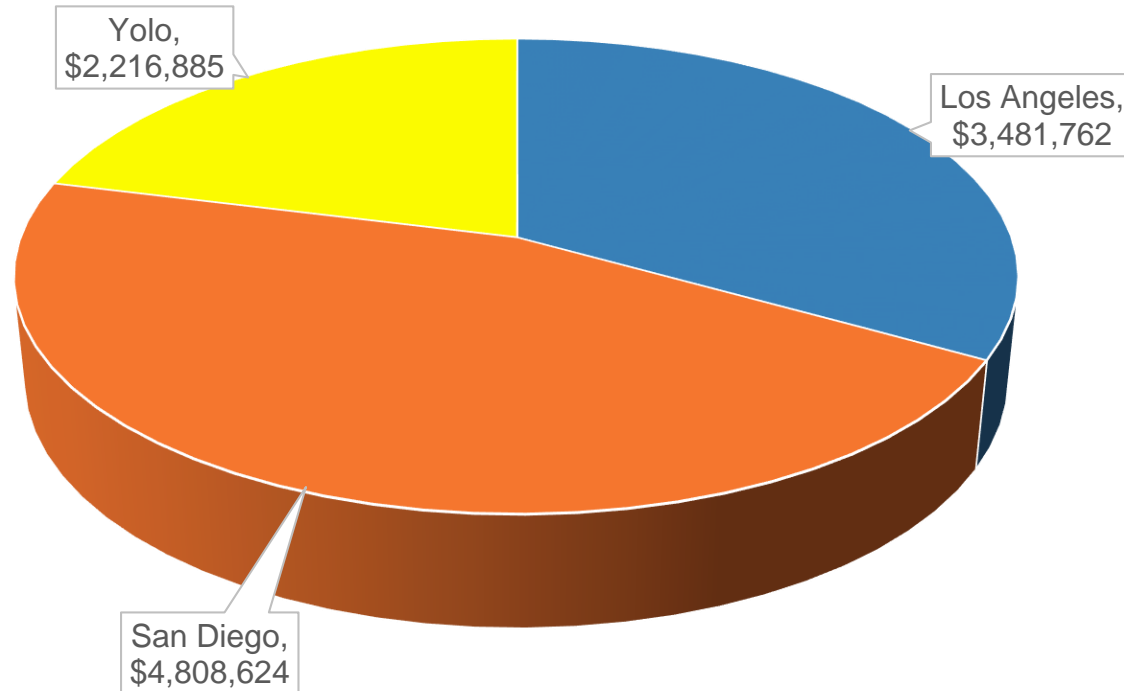
## FY21 Revenue Stream by Category – actual through December 2020





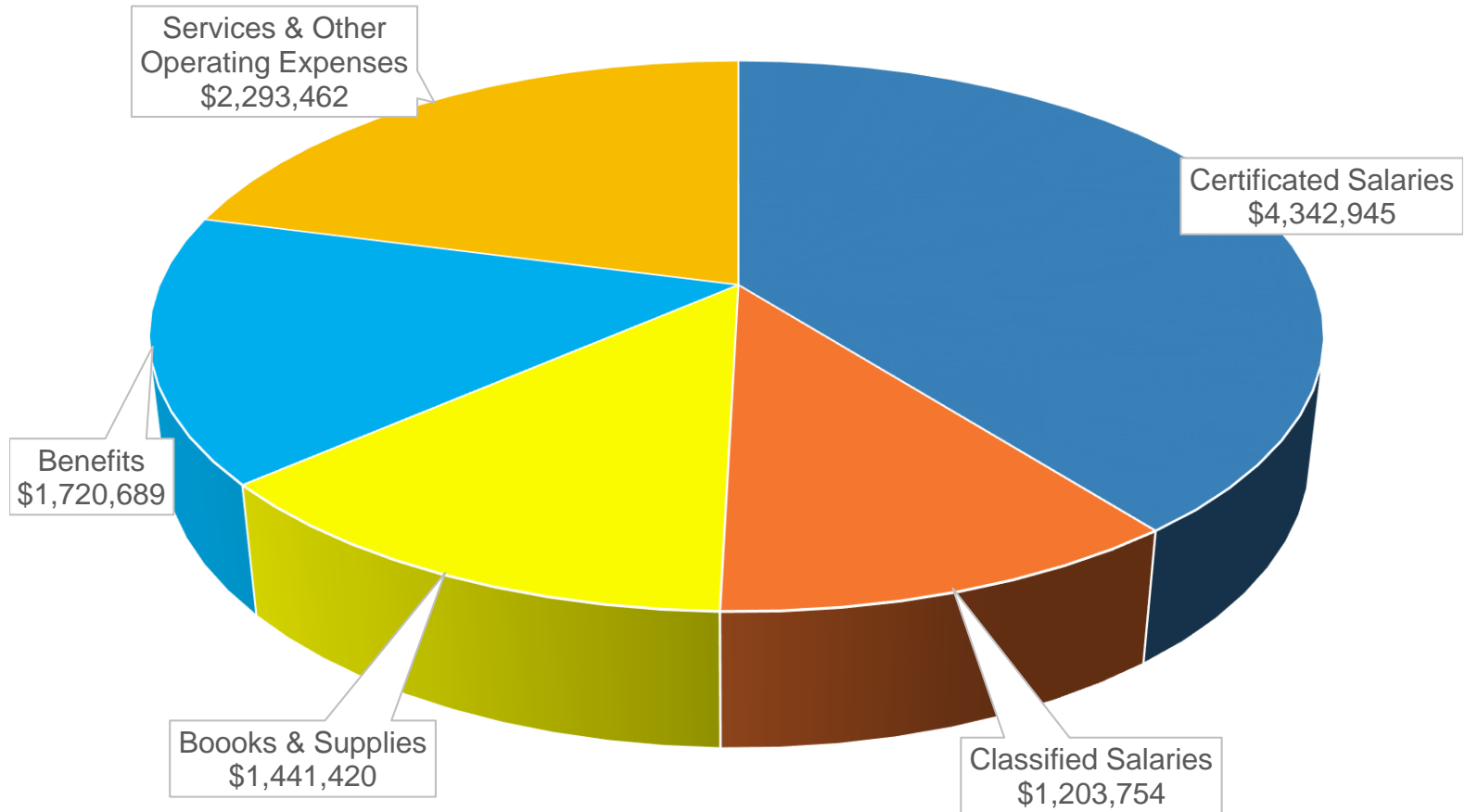


## FY21 Expenses by Charter – actual through December 2020



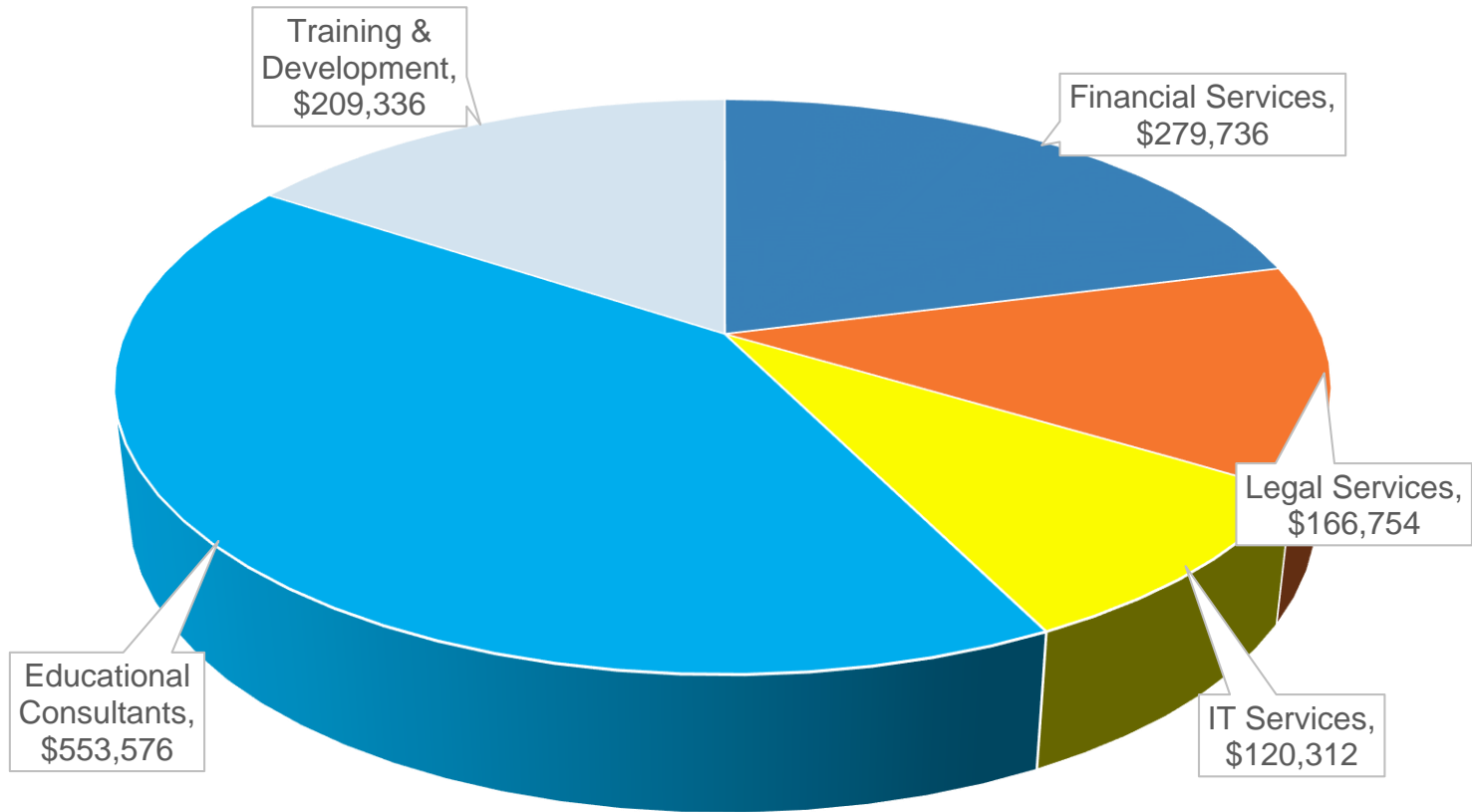


## Top 5 Expense Categories

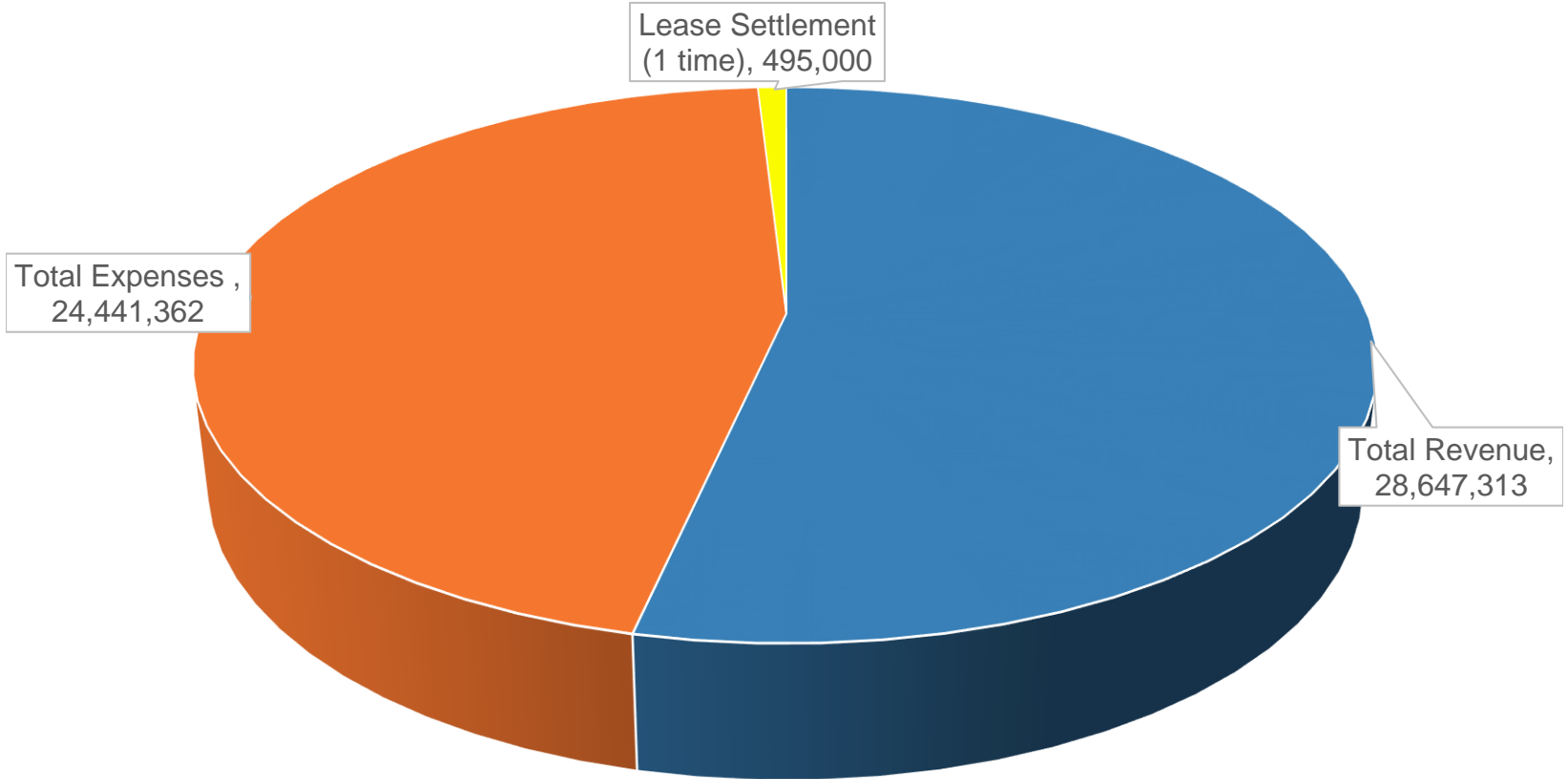




## Top 5 Category 5000 Expenses



# FY 21 CMO

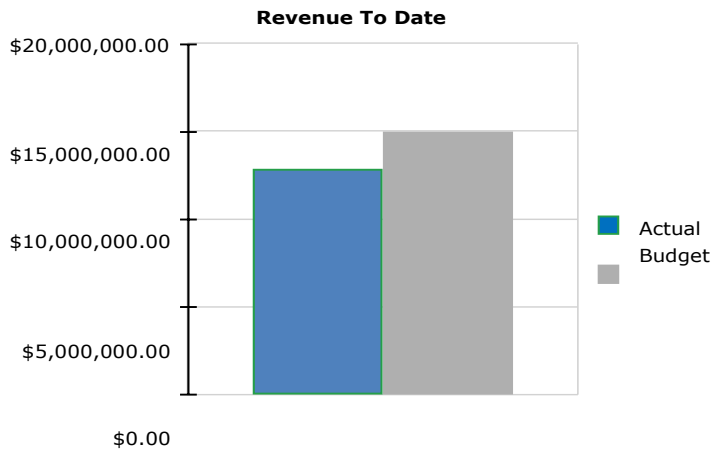


■ Total Revenue    ■ Total Expenses    ■ Lease Settlement    (1 time)



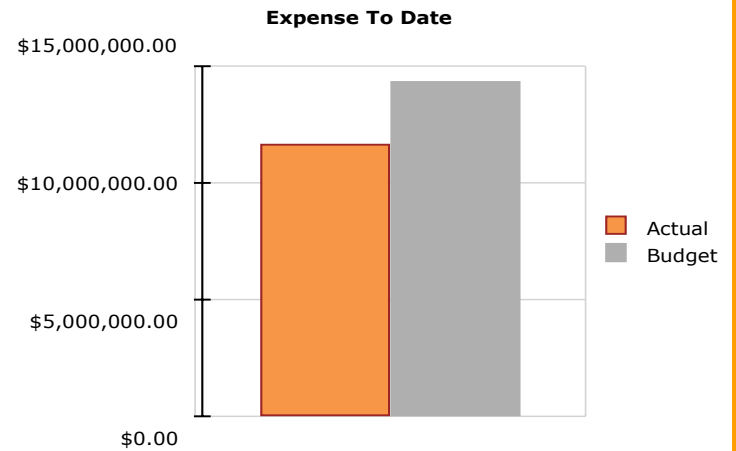
## Financial Snapshot as of December 2020

**Book Balance:** \$10,130,687



### Revenue Summary

Actual	\$12,890,071
Budget	\$15,023,025
Actual to Budget	86 %



### Expense Summary

Actual	\$11,673,780
Budget	\$14,361,338
Actual to Budget	81 %



# Questions?



Contact:

Lisa Fishman | Chief Financial Officer

(818) 732-4692

[lfishman@compasscharters.org](mailto:lfishman@compasscharters.org)

[@CCSCFO](#)